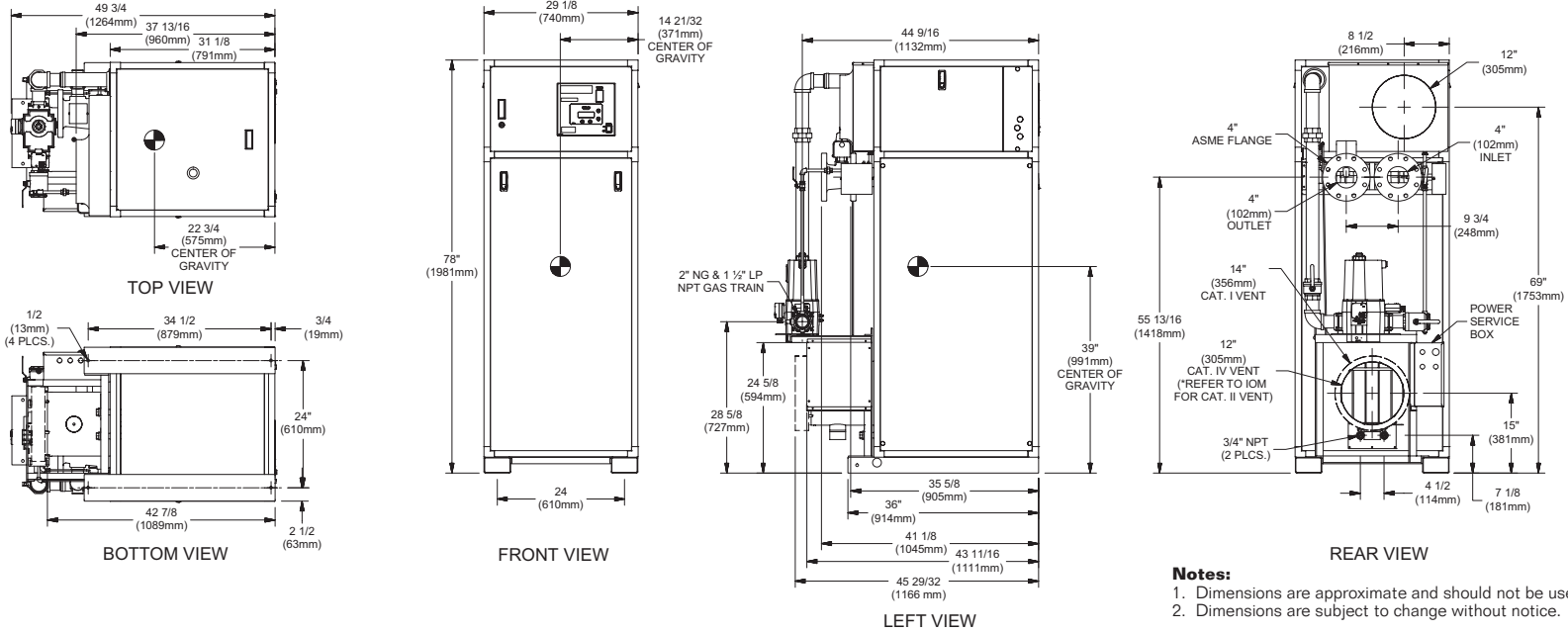


INDOOR UNIT



BOILER CERTIFIED RATINGS & CAPACITIES

Fuel Type	Natural/Propane Gas	Boiler FLA	9.5* @ 230V
Input BTU/hr.	5,000,000 / 1,465 kW	Min. Gas Pressure Required	3.5" WC**
Output BTU/hr.	4,255,000 / 1,247 kW	Max. Gas Pressure Allowed	14" WC
Electrical Requirements	(L1, L2, L3, GND) 230 VAC / 3 ph / 60 hz	Operating Weight	1,684 lbs. / 765 kgs

BOILER TEMPERATURE RISE / PRESSURE DROP†

30°F / 16.7°C				35°F / 19.4°C			
Flow Rate		Pressure Drop		Flow Rate		Pressure Drop	
GPM	L/s	Ft	kPa	GPM	L/s	Ft	kPa
283.7	17.9	21.20	62.5	243.1	15.3	19.70	58.0

† Cupronickel heat exchanger standard.

BOILER / WATER HEATER TRIM & CONTROLS

Main Gas Valve Body	Dungs MBC 4000	High Limit (Manual Reset)	Jumo
Firing Valve	Honeywell B200T1066 2"	High Limit (Auto Reset)	Jumo
Main Ball Valve	2"	Blocked Flue Switch	HUBA
Manual Pilot Valve	1/4" Honeywell B528	Air Switch	HUBA
Pilot Regulator	White-Rodgers 25M	Blower Motor	American Fan 5 HP - FLA 9
Ignition Control	Honeywell RM7895C	Relief Valve - MB	1-1/2" x 2" set @ 50 psi
Operating Control	HeatNet®	Relief Valve - MW	1" x 1" set @ 125 psi
		Flow Switch	ITT FS8W

WATER HEATER HOURLY RECOVERY PENDING

A.S.M.E.

ASME Sect IV Htg Surface	544.3 Sq Ft / 50.56 Sq M	Design Data	Max. 160 psig & 250°F
Water Volume	15.6 gal / 59.12 Liters		

* Add circulator amps.

** For incoming gas pressures lower than 3.5" W.C. natural or propane, consult factory.

REP FIRM _____
SUBMITTED BY _____
JOB NAME _____
ARCHITECT _____
ENGINEER _____
CONTRACTOR _____
DATE _____

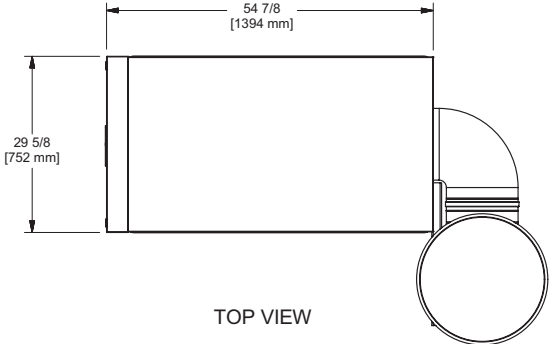
FUTERA XLF 5000

Category I, II or IV Appliance
 (see Installation and Operation Manual for venting information)

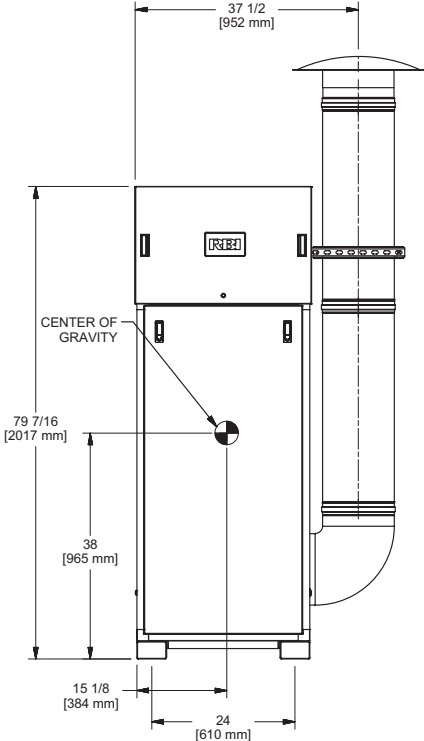


A Division of Mestek, Inc.
 Westfield, MA 01085
 (413) 568-9571

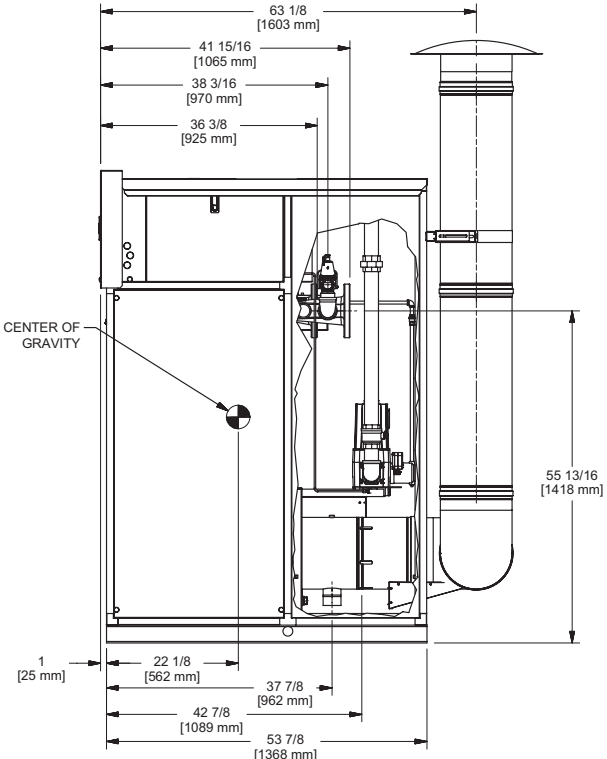
OUTDOOR UNIT



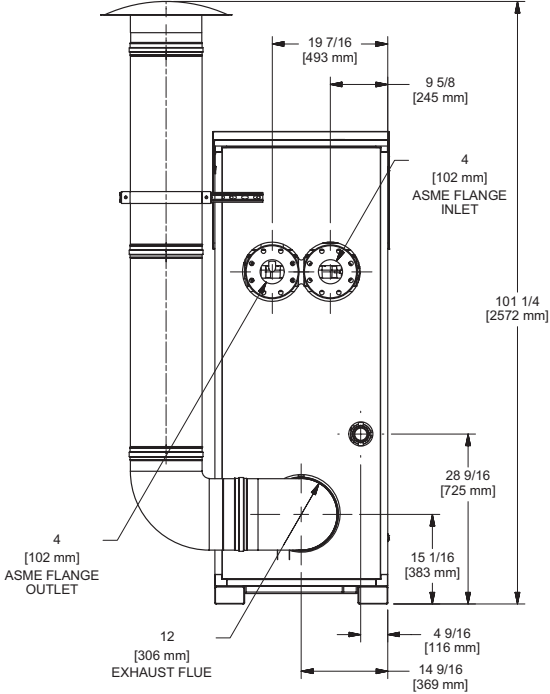
TOP VIEW



FRONT VIEW



SIDE VIEW



BACK VIEW

FUTERA XLF 5000

Notes:
1. Dimensions are approximate and should not be used to "rough-in" equipment.
2. Dimensions are subject to change without notice.